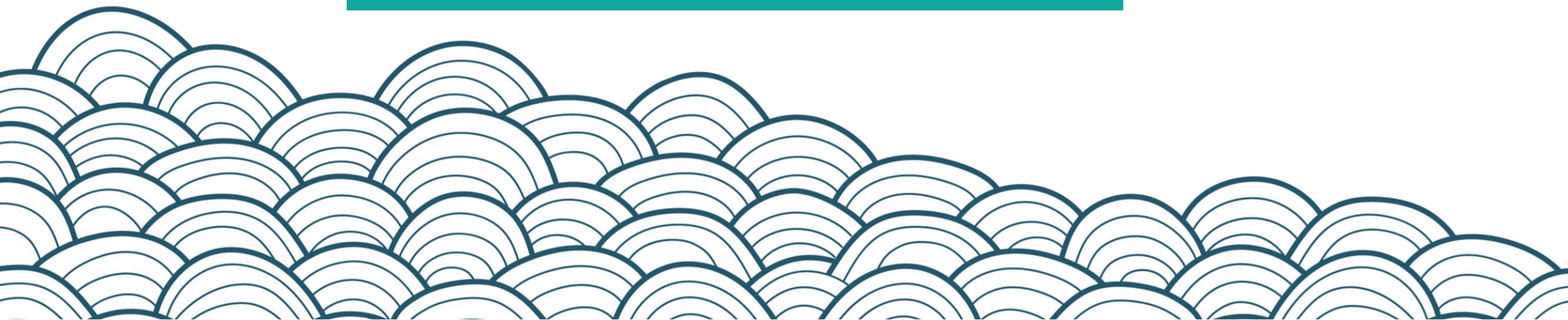




RURACTIVE

Project presentation

First RURACTIVE Forum



Co-funded by
the European Union



UK Research
and Innovation



Project funded by

Schweizerische Eidgenossenschaft
Confédération suisse
Confederazione Svizzera
Confederaziun svizra

Swiss Confederation

Federal Department of Economic Affairs,
Education and Research EAER,
State Secretariat for Education,
Research and Innovation SERI

Claudia de Luca
UNIBO
10-02-2025

RURACTIVE General information

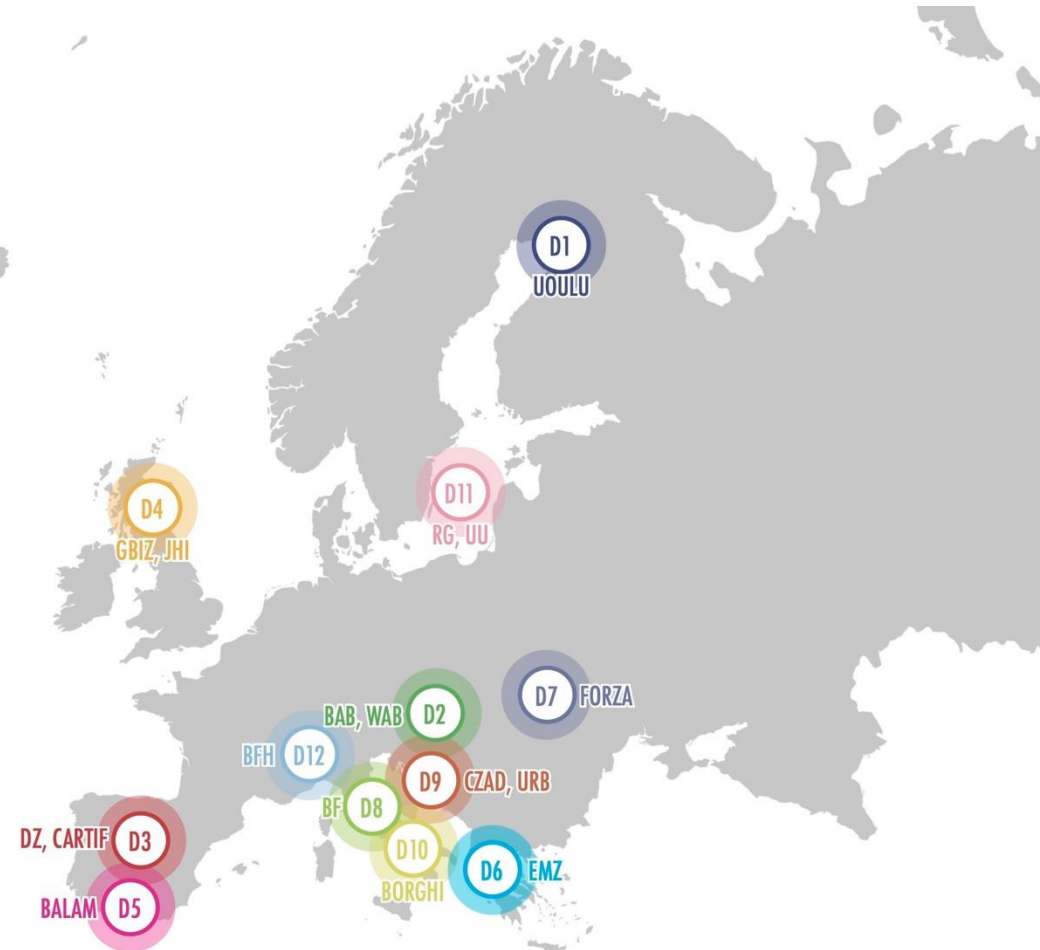
Topic: HORIZON-CL6-2022-COMMUNITIES-02-01-
two-stage

Type of Action: Innovation action

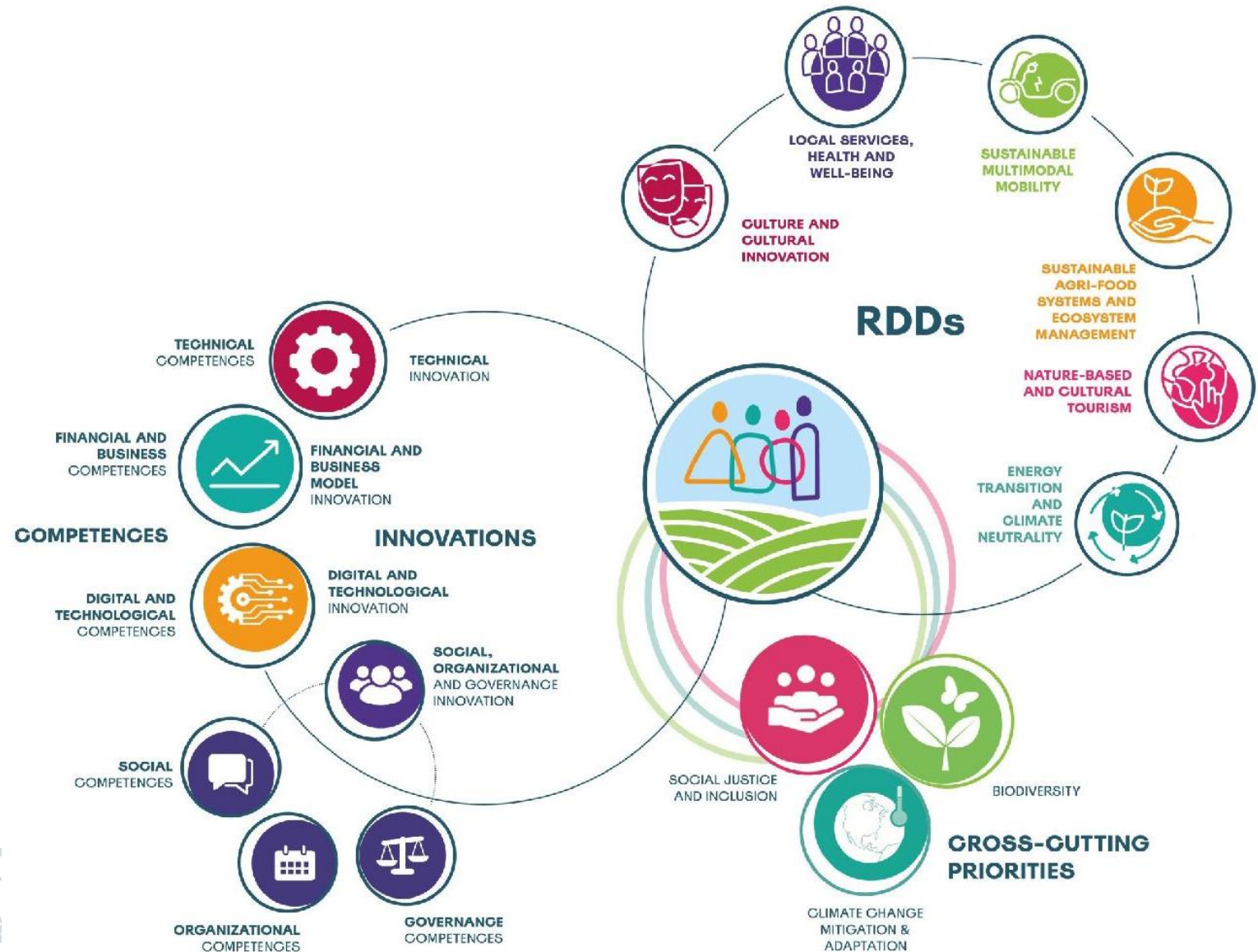
Project Partners: 29 partners from 12 countries,
both technical partners and organization
representing rural communities (Dynamos)

Project duration: 4 years, 1st September 2023 - 31st
August 2027

Project budget: about 6.5 mil. – 1.2 million FSTP



RURACTIVE conceptual framework




RURACTIVE review of solutions for rural development- the solutions catalogue

- Solutions are **place-based established practices, products, processes, actions, models of governance, decision making practices, initiatives, policies and plans** made up by one or a combination of various **forms of innovations** that drive rural communities towards a sustainable transformation.
- First version of the catalogue developed with around **450 solutions mapped**
- Solutions have been collected from **RURACTIVE Dynamos territories** and from harvesting **previous relevant projects** (e.g. RURITAGE, SIMRA, DESIRA)



RURACTIVE solutions catalogue – how are we going to make it accessible?

- **Explanatory factsheets** developed for around **150 solutions** will be soon available on the website
- The **Data Driven Decision Support System** has started its activities and will allow users to navigate all solutions also tailoring choices based on the user's needs

 **RURACTIVE** Decision Support Tool

Monitoring of the elderly with sensors in their homes in rural areas. ^

General Information

Organisation: Diputación de Zamora
Organisation Type: Local public body (e.g. local council)
Aim: The solution aimed to provide to the rural communities: - Accompanying and monitoring older people who live alone in their rural environment. - Increasing security so that these people can stay in their homes for as long as possible. - Creation of a new job in the municipalities: a caregiver ('Silver Caregiver') who not only watches over the technology that monitors these people, but also accompanies them and helps them in their daily tasks. To sum up, on one hand, the solution involves the installation of sensors in different rooms of the houses to monitor older people (with necessary guarantees of privacy and intimacy), aiming to identify and alert possible anomalies that could lead to serious incidents. On the other hand, it contemplates the role of a companion who provides support to these individuals and interprets the information coming from these sensors. The implementation of technology in the care and attention of the elderly aims to 'ensure the elderly person's continued presence in their own environment' guaranteeing their quality of life and well-being within their own home. Technological tools enable remote care based on the Internet of Things system, as well as monitoring of routines within the home, generating significant, preventive, and real-time attention information. Sensors used are non-invasive that respects the privacy of the individuals.

 **RURACTIVE**

Solutions Factsheets

 **Listen-Touch-Feel**

 Zagori, Greece
 Mountain area; Predominantly rural, remote regions
 Led by: Ecomuseum Zagori
 Supported by donations, 5.000€

Nature-based and cultural tourism
Destination development

Aim
"Listen-Touch-Feel" is a museum-educational activity of the Ecomuseum Zagori for people with visual disabilities. It focuses on a series of experiential learning activities where participants engage in tactile and auditory exploration to enhance their understanding of the region's cultural and natural heritage. The project specifically explores the historical stone bridges of Zagori. The interpretive tour and the audio walk (echo-walk) focus on three stone bridges outside the village of Kipi (Bridge of Kokkoris, Bridge of Plakidas or Kalogeriko or three-arch, and the Bridge of the Mill). Supplementary museum 3D printed geomorphology of the route and bridges, and material from the sound recording during the hiking tour (i.e., the soundscape) allow a closer inspection by participants.

Stakeholders involved

- Fab Lab Ioannina
- Northern Pindos National Park
- Service of Modern Monuments and Technical Works of Epirus
- North Ionian and West Macedonia.

The programme lasts for three hours and is split into two phases. The first phase was dedicated to the cultural heritage of the region, focusing on the history and architecture of the bridges. While listening to the information conveyed by the museum guides, participants can inspect the 3D printed models before guides lead them in an educational walking tour of the bridges and discussion of the experience.

The second phase focuses on the natural heritage of the area and its biodiversity. Expert scientific staff, volunteers, and Ecomuseum members lead an educational audio walk to record sonic biodiversity. Concentration exercises are conducted to encourage participants to listen more attentively to the natural landscape and develop empathy and understanding of biodiversity encountered on pathways of high environmental interest. This immersive experience allows for in-depth listening to the surroundings and is complemented by a short walk which focusing on the biodiversity of the Zagori area.



A participant engaging in the 'Listen-Touch-Feel' museum-educational activity, experiencing historical stone bridges through 3D models and soundscapes.

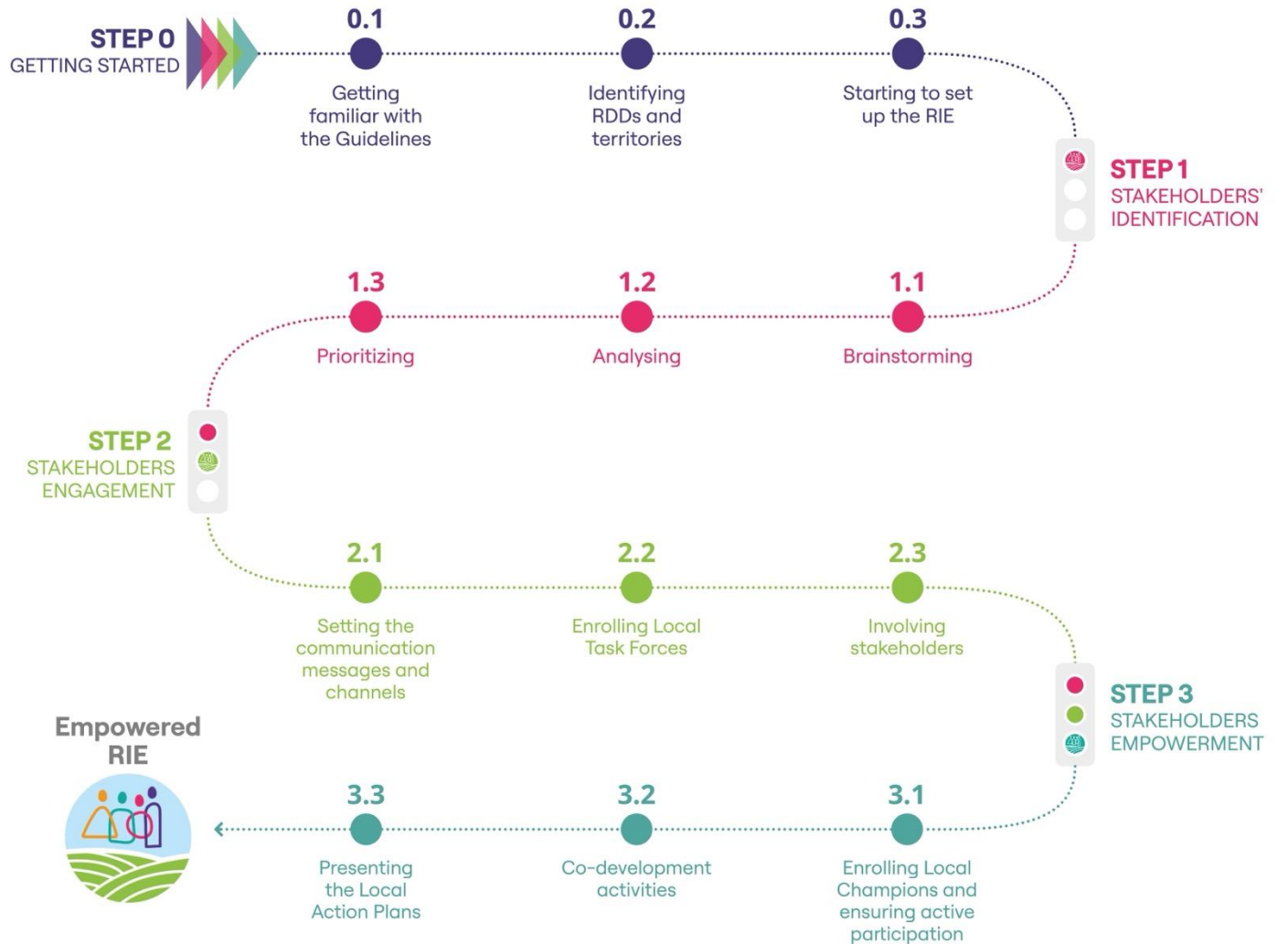


Photo credit: Urosh Grabner, Karavanki / Karavanki

RURACTIVE – Dynamos co-creation of Local Action Plans for rural development

RURACTIVE– RIE solutions co-development

RURACTIVE defined the methodology for **supporting Dynamos** and all **interested rural communities** to **implement an inclusive community-led co-development** process by setting up **Rural Innovation Ecosystems (RIEs)** for enabling cross-sector collaboration.



RIE - Step0— Getting started

Within Step 0 Dynamos have identified:

- RIE Coordinator (s)
- RIE site (s)
- Previous stakeholders mapping processes and participatory processes
- Chosen RDDs



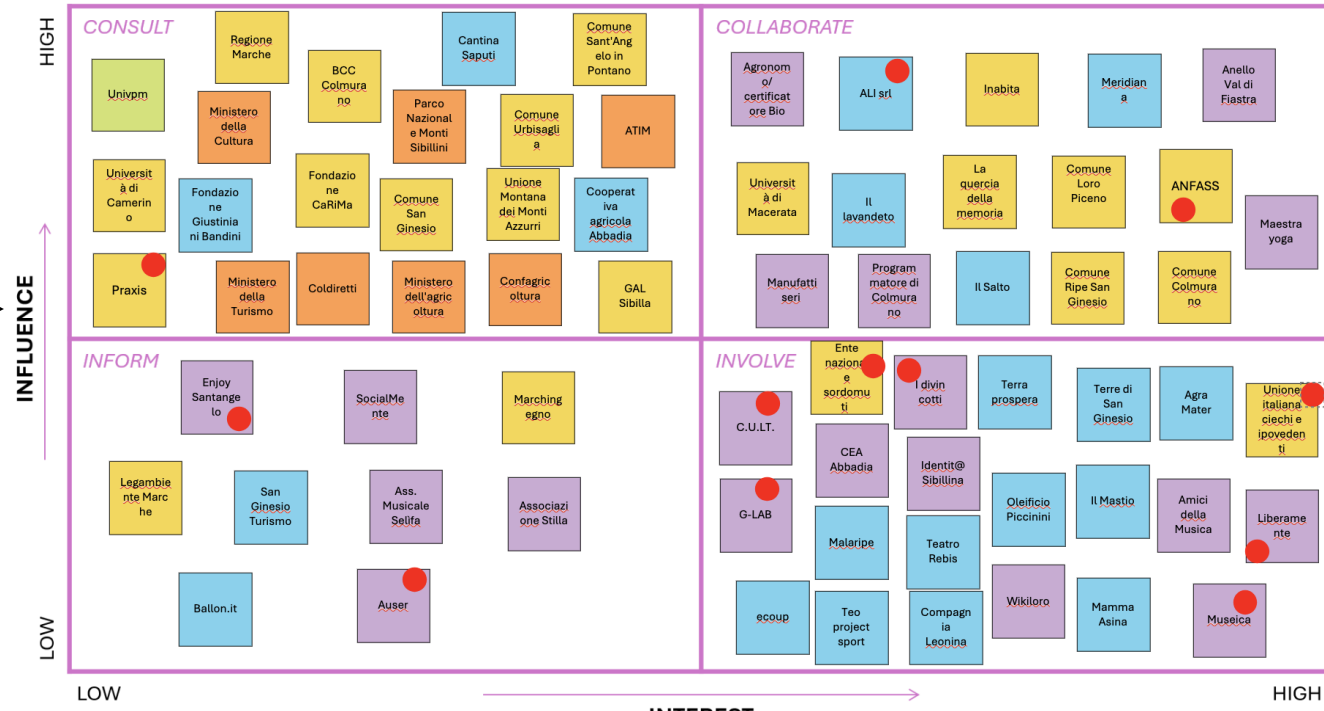
RIE Step1 Stakeholders' identification

Dynamos first brainstormed around possible interested stakeholders, thinking about the RDD they selected and the crosscutting priorities of RURACTIONE

Then they analysed and prioritized them according with some criteria that include interest, influence and inclusivity

Phase 1 - Brainstorming

NO.	Entity/association/organization name	Brief description	Website	Contact details available	Domain	Expertise - RDDs	If 'transversal', please specify	Groups at risk of exclusion and under-representation	Community champion	Notes
1	Town of Putignano	Villages and communities cooperations and projects coordinator in Municipal level	https://www.linkedin.com/company/town-putignano	YES	Public/User	Local services, health and well-being Expert in more than one RDD	Other	Other		Coordinates municipal village association represent
2	Village of Livo and Lucania association	Rural village with 138 people (2018, 79 men, 60 women). Village association	https://www.livovillaggio.it/	YES	Public/User	Nature-based and cultural tourism Expert in more than one RDD	Other	Other		Coordinates river and migratory
3	Livorno river association	Fishing district leader also active in fishing tourism and wetland restoration projects	https://www.livorno.it/	YES	Public/User	Sustainable agri-food systems an Expert in more than one RDD	Other	Other		Parma is active, old rural village river catchment, is same
4	Village of Panama and Panama association	Rural village with some 40 permanent resident, 25 in neighbourhood and 100 season	http://www.panama.it/	YES	Public/User	Local services, health and well-being Expert in more than one RDD	Other	Other		Microcity coordinates local
5	Fishing district of Ippolito river	Fishing district leader, and whole family active also in Panama village association	https://www.livorno.it/	YES	Public/User	Sustainable agri-food systems an Expert in more than one RDD	Other	Other		Microcity coordinates local
6	Livorno - project	Ippolito river catchment tourism project of Municipal development company	https://microcity.it/	YES	Policy	Nature-based and cultural tourism High influence	Other	Other		Microcity coordinates local
7	Hilippos Ltd.	Carbon trading/restoration/compensation company	https://www.hilippos.it/	YES	Industry/services/investors	Sustainable agri-food systems an Expert in more than one RDD	Other	Other		Negotiates about potential peat
8	Windpower Ltd. (Windpower company)	Wind energy company which is planning wind park close to Village of Livo for exam	https://www.windpower.it/	YES	Industry/services/investors	Energy transition and climate ne Expert in climate change mitigation	Other	Other		Windpower company that is a
9	Puhoi Ltd (Electric consortium)	Electric company consortium specialised in wind and hydro-power	https://www.puhoi.it/en/puhoi/	YES	Industry/services/investors	Energy transition and climate ne Expert in climate change mitigation	Other	Other		Renewable energy focusing c
10	Puhoi Vinea Ltd	Electric company, including hydro-power	https://www.puhoi.it/en/puhoi/	YES	Industry/services/investors	Energy transition and climate ne High influence	Other	Other		Large scale renewable energy
11	Metashiliv / Luontopäivä	State forestry company	https://www.metsa.fi/en/	YES	Industry/services/investors	Energy transition and climate ne High influence	Other	Other		State forestry enterprise plan
12	Metashiliv / Luontopäivä	State nature conservation company	https://www.metsa.fi/en/	YES	Public/User	Nature-based and cultural tourism Expert in biodiversity	Other	Other		State organization managing
13	Metashiliv / Luontopäivä	State property sales company	https://www.metsa.fi/en/	YES	Industry/services/investors	Local services, health and well-being High influence	Other	Other		State business organization n
14	Metashiliv / Luontopäivä	State covered, Sales company	https://www.metsa.fi/en/	YES	Industry/services/investors	Sustainable agri-food systems an High influence	Other	Other		State business organization n
15	Neova (former WAPD) peat energy comp	State peat energy company	https://www.neova-group.com/	YES	Industry/services/investors	Energy transition and climate ne High influence	Other	Other		Company managing (and over
16	Tuvenruki Ltd. (City of Oulu peat energy)	Part of Oulu energy / Energy of Oulu electricity company, City of Oulu owns and it	https://www.tuvenruki.fi/	YES	Industry/services/investors	Energy transition and climate ne High influence	Other	Other		City of Oulu with its own dec
17	City of Oulu / Oulu energy electricity	City has expanded now to Ippolito river, when old rural municipalities had to join	https://www.tuvenruki.fi/	YES	Industry/services/investors	Energy transition and climate ne High influence	Other	Other		Is a State authority, with regio
18	ELI center / Centre for Economic Development	State authority for licensing and planning land uses. Both state level and regional	https://www.eli.fi/en/	YES	Policy	Sustainable agri-food systems an Expert in more than one RDD	Other	Other		Is a State authority, with regio
19	AV / Regional State Administrative Agency	Land, industry and resources licensing authority	https://www.avi.fi/en/	YES	Policy	Energy transition and climate ne Expert in more than one RDD	Other	Other		Is a State authority, with regio
20	Luke / Natural resources institute Finland	State research / monitoring institution	https://www.luke.fi/en/	YES	Research	Sustainable agri-food systems an Expert in more than one RDD	Other	Other		State research organization
21	SINVI / Finland Environmental Institute	State research / monitoring institution	https://www.sinvi.fi/en/	YES	Research	Sustainable agri-food systems an Expert in more than one RDD	Other	Other		State research organization
22	Pudasjärven Livo palikunta	Local reindeer herding cooperative in Livo village area	https://palikunta.fi/	YES	Industry/services/investors	Sustainable agri-food systems an Expert in social justice and inclu	Other	Other		Traditional local collaborative
23	Kotajärven palikunta	Local reindeer herding cooperative in Panama village area	https://palikunta.fi/	YES	Industry/services/investors	Sustainable agri-food systems an Expert in social justice and inclu	Other	Other		Traditional local collaborative
24	Forestry societies	Site specific Forestry advisory organisation for forest owners	https://www.metsa.fi/	YES	Industry/services/investors	Sustainable agri-food systems an High influence	Other	Other		Relevant Forestry Society des
25	Ex - peat energy contractor	Look for other possibilities than peat energy for his earth work	https://www.albi.fi/	YES	Industry/services/investors	Energy transition and climate neutrality	Other	Other		Lots of peat energy contracto
26	MTK Agricultural interest organisation	Farmer and developer activist	https://mtk.fi/	YES	Industry/services/investors	Sustainable agri-food systems an Expert in more than one RDD	Other	Other		Farmer, but also innovator an
27	Microcity Ltd. Ippolito river agreement	Coordinate projects along Ippolito river	https://microcity.it/	YES	Policy	Sustainable agri-food systems an Expert in more than one RDD	Other	Other		Local farmer as coordinator
28	Town of Putignano	Tourism development officer	https://www.putignano.it/	YES	Policy	Nature-based and cultural tourism Expert in more than one RDD	Other	Other		Town of Putignano, tourism d
29	University of Oulu/Microcity	MATIAA project is ESR funded project of Microcity and University of Oulu which is	https://www.oulu.fi/en/microcity/	YES	Research	Sustainable multimodal mobility Expert in more than one RDD	Other	Other		MATIAA project is ESR funde



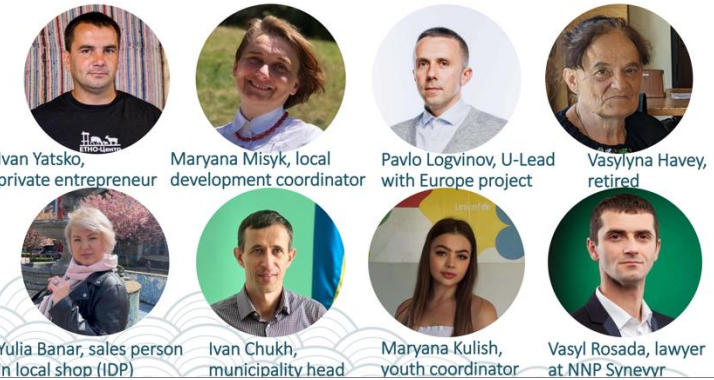
RIE Step2 Stakeholders' engagement

Dynamos have first set up **their communication messages and channels**



Dynamos **have identified and engage** core stakeholders to form the **Local Task Forces (LTF)**

Local task force Dynamo 7 – ZAKARPATTYA, Synevyr municipality

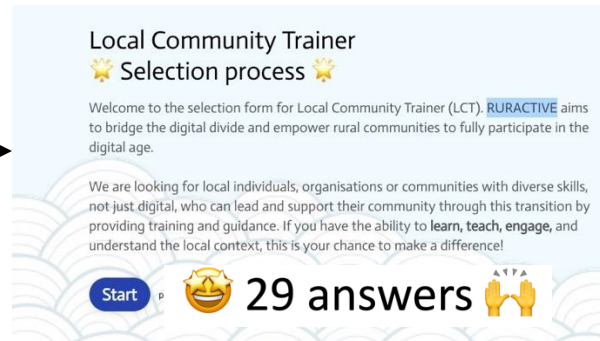


Dynamos have organized an Open Day where to first **present RURACTIVE** to the **local communities**

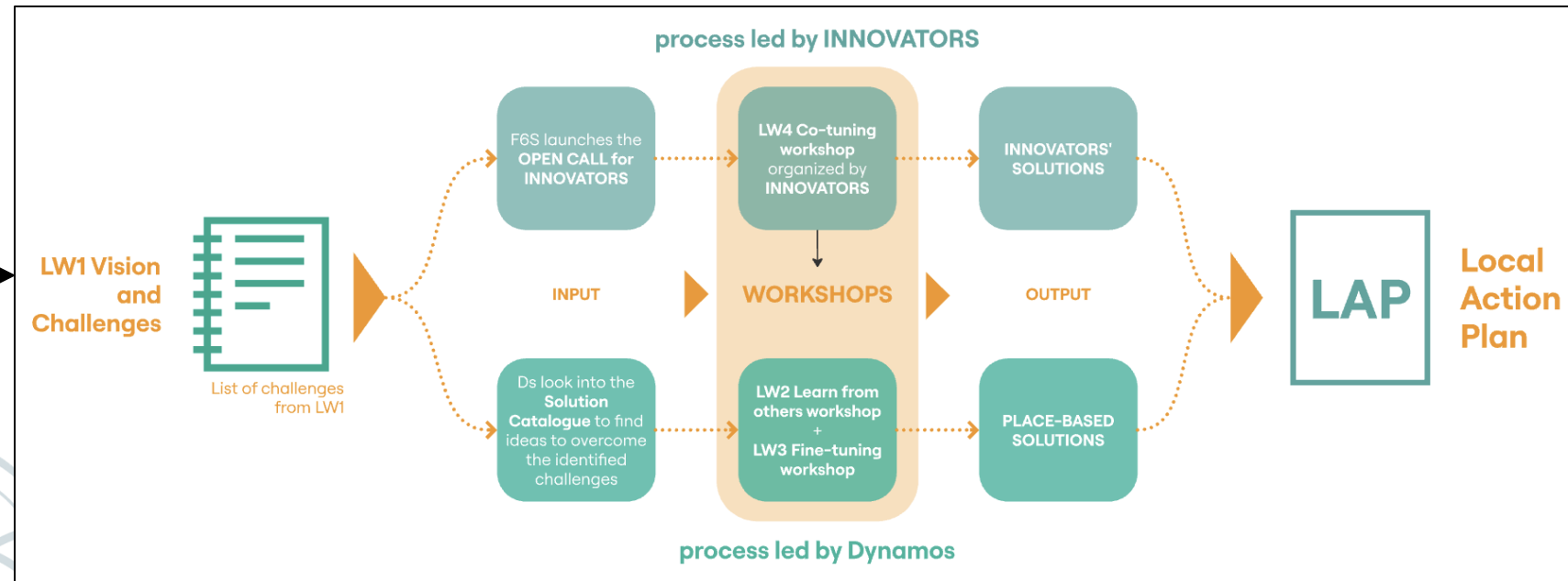


RIE Step3 Stakeholders' empowerment

Dynamos have started the **enrolment of the Local Community Trainer**



Dynamos have started **co-development phase within their RIE, with 4 main Local Workshops (LW)** to be implemented in each RIE



RURACTIVE – opening to external innovators

OPEN CALL FOR INNOVATORS

Do you have the next big solution to help rural areas and become a part of the innovative wave transforming rural Europe?

Apply to our Open Call for Innovators for your chance to get funded up to €90,000, work closely with rural dynamos and receive training and support to co-develop your solutions that meet real community needs!

Take part in driving innovation and transformation in rural communities across Europe! RURACTIVE will soon be seeking European innovators - Startups, Small and Medium-sized Enterprises, researchers - willing to co-develop smart solutions for its 12 pilot areas, [the RURACTIVE Dynamos](#).

Innovators will be invited to answer the RURACTIVE Open Call and present solutions that address specific challenges within the scope of the [RURACTIVE Rural Development Drivers](#):



RURACTIVE – call for Additional Dynamos

In March we are going to open a **call for Additional territories** interested in **activating a rural development process** in their area and in **learning the RURACTIVE methodology**



RURACTIVE –
and what
about
policies?



RURACTIVE – Analysis of EU policies

Year	2023	2024	2025	2026	2027	2028	2029
Existing policies	Jun: Mid Term MFF Review Dec: End 2014-2027 Programming period	Feb: Mid Term Review EU Budget agreed & Review Next Generation EU		Dec: End NGEU	Dec: End MFF 2021-27	Jan: Start EU Budget 2028-2034	
Political Developments		Jun: EP elections July: New EU Priorities Nov: New Commission	Jan: new <u>CoR</u> Mandate		Jan: EP midterm switch		May/Jun: EP Elections
New Programmes/ EU policies		March-April post 2027 Commission ideas (9CR, LTVRA, Letta)	May: 2028-2034 MFF & Regulations tabled	EP-Council trilogues Dec: Regulations Agreed	Jun: Start Drafting CSP/OPs	Dec: End Drafting PA/CSP/OPs	Jan: new 2028-34 programmes start

RURACTIVE – Analysis of local policies at Dynamos level



Energy transition and climate neutrality

- land use for energy production, wind power, biomass production towards climate neutrality
- increase the energy production coming from wind power
- assess the impacts of the wind power plan to a sufficient extent (for instance with a local masterplan) in order to reconcile the needs of land use



Sustainable agri-food and ecosystem management

- promote the reduction of emissions from land use, forestry and agriculture
- ecosystem management of forests, particularly peatland to improve them as carbon sinks
- ensure the involvement of land owners in decision-making concerning nature conservation and restoration
- build wetlands and network of resting area, restore mires and catchments, capture small carnivores to preserve biodiversity
- incentives for forest management practices
- increase fisheries tourism business



Nature-based and cultural tourism

- land use for tourism purposes towards climate neutrality
- reduce air tourism
- protect areas of valuable landscapes shaped by human activity
- support sustainable development and inclusion through tourism
- respond to the digital transformation
- improve accessibility and cooperation within the sector
- ensure an operating environment that supports competitiveness and employment
- produce sustainable growth with focus on experiences and impacts on network basis
- develop product portfolio of cultural tourism and international cultural trails
- focus on sustainable and diverse nature recreation as a national success factor
- enhance the access and the value of nearby natural environments in decision-making
- promotion of health and wellbeing
- develop business models, marketing and economic sustainability in sustainable tourism
- improve rural tourism by stakeholders association initiatives

What do our local policies tell us?

D6 – LOCAL LEVEL

LOCAL POLICIES

Title of the policy in English	Date of issue	Scale
Climate plan for Land Use Sector	2022	National
Finland's national Climate Act	2022	National
Land Use and Building Act (132/1999)	1999	National
Helmi Programme	2021	National
Decree on Voluntary Ecological Compensation	2023	National
Nature Conservation Act and Nature Conservation Decree	1996	National
Decree on incentive programme for forestry	2023	National
National tourism strategy of Finland 2022–2028	2022	National
Roadmap for the National Development of Cultural Tourism	2023	National
National Nature Recreation Strategy 2030	2022	National
Development program of Fishing tourism 2023–2033	2023	National
Visit Finland strategy 2021–2025	2021	National
Rural tourism development initiative for government	2022	National
Regional tourism strategy of Northern Ostrobothnia 2021–2023	2021	Regional

Climate change mitigation and adaptation



- strengthening of removals by carbon sinks
- emission reduction targets
- climate neutrality of Finland by 2035

Biodiversity



- collaboration between numerous stakeholders in restoration and management measures
- target necessary measures to maximize their impact on biodiversity
- strengthen Finland's biodiversity and safeguard the vital ecosystem services
- provide incentives for nature conservation
- use ecological compensation to adverse impacts on biodiversity only when the harm cannot be prevented or mitigated
- preserve the diversity of the nature, ensuring the favourable conservation status of habitats and native species
- protect biodiversity in the development of nature recreation

Social justice and inclusion

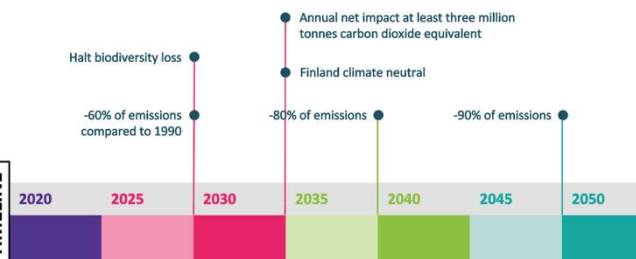


- ensure that the measures implemented are just
- promote sustainable development
- ensure participation in land use planning
- option to use eco-social compensation in nature conservation
- ensure everyman's right to access nature
- Responsible and safe tourism environment

What do our local policies tell us?

D6 – LOCAL LEVEL

TIMELINE



Thank you

Claudia de Luca
UNIBO



RURACTIVE



Co-funded by
the European Union



UK Research
and Innovation



Project funded by

Schweizerische Eidgenossenschaft
Confédération suisse
Confederazione Svizzera
Confederaziun svizra

Swiss Confederation

Federal Department of Economic Affairs,
Education and Research EAER,
State Secretariat for Education,
Research and Innovation SERI